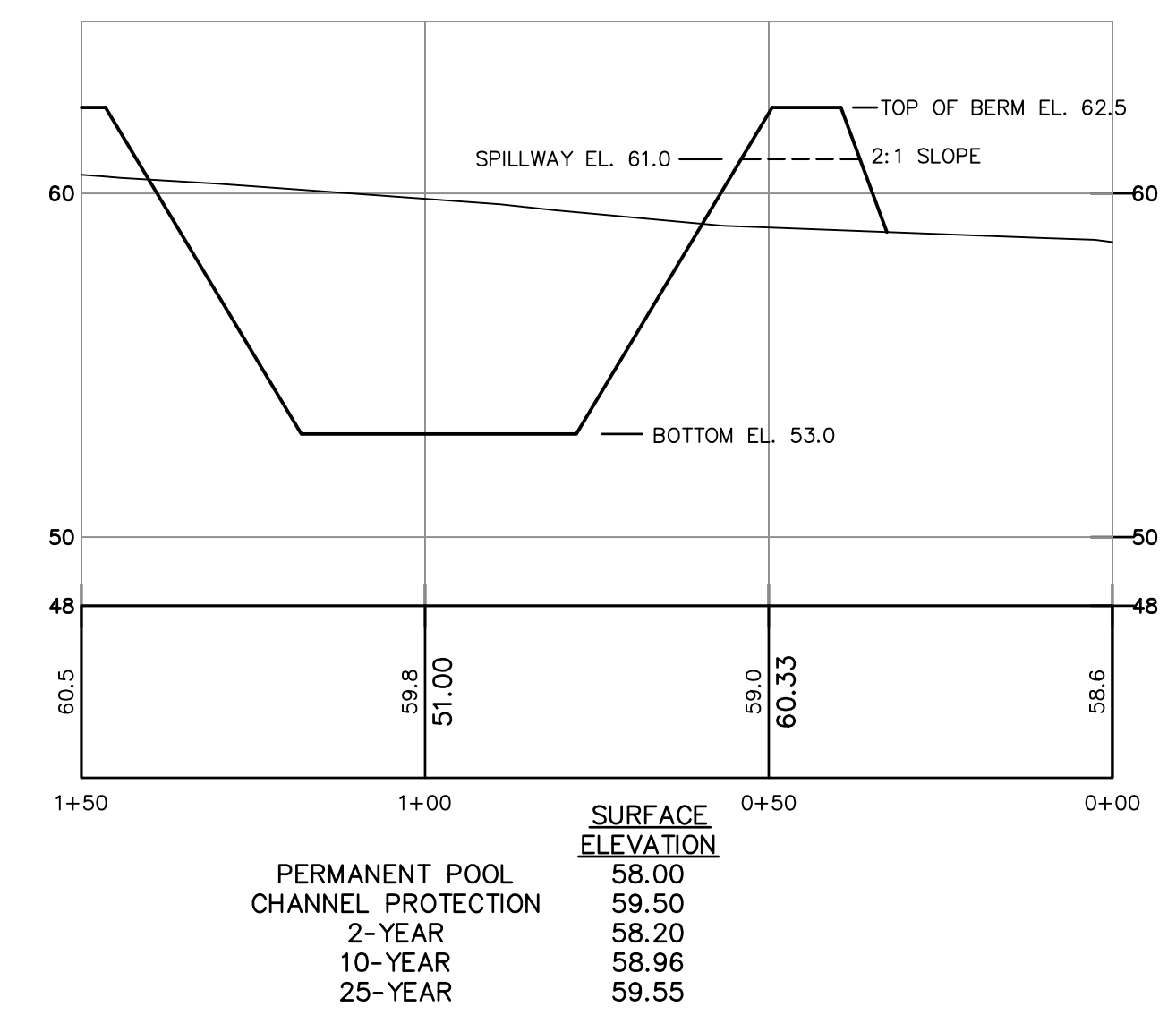
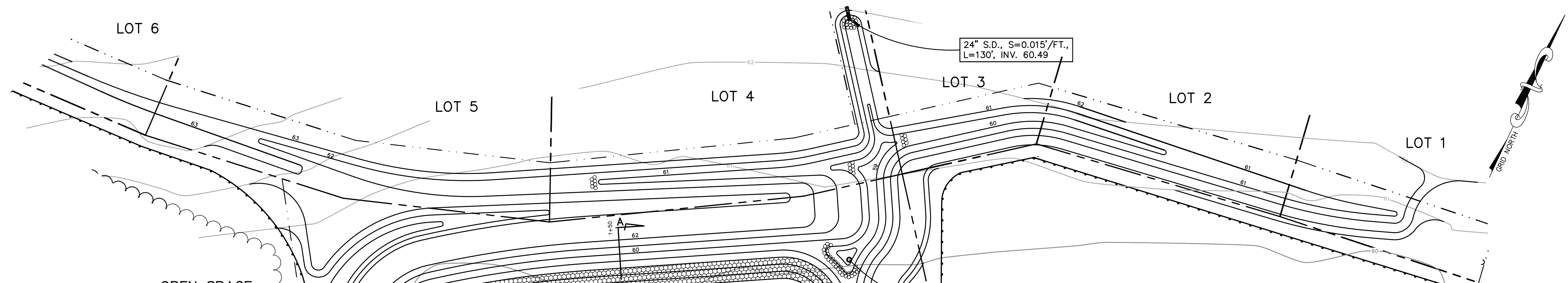
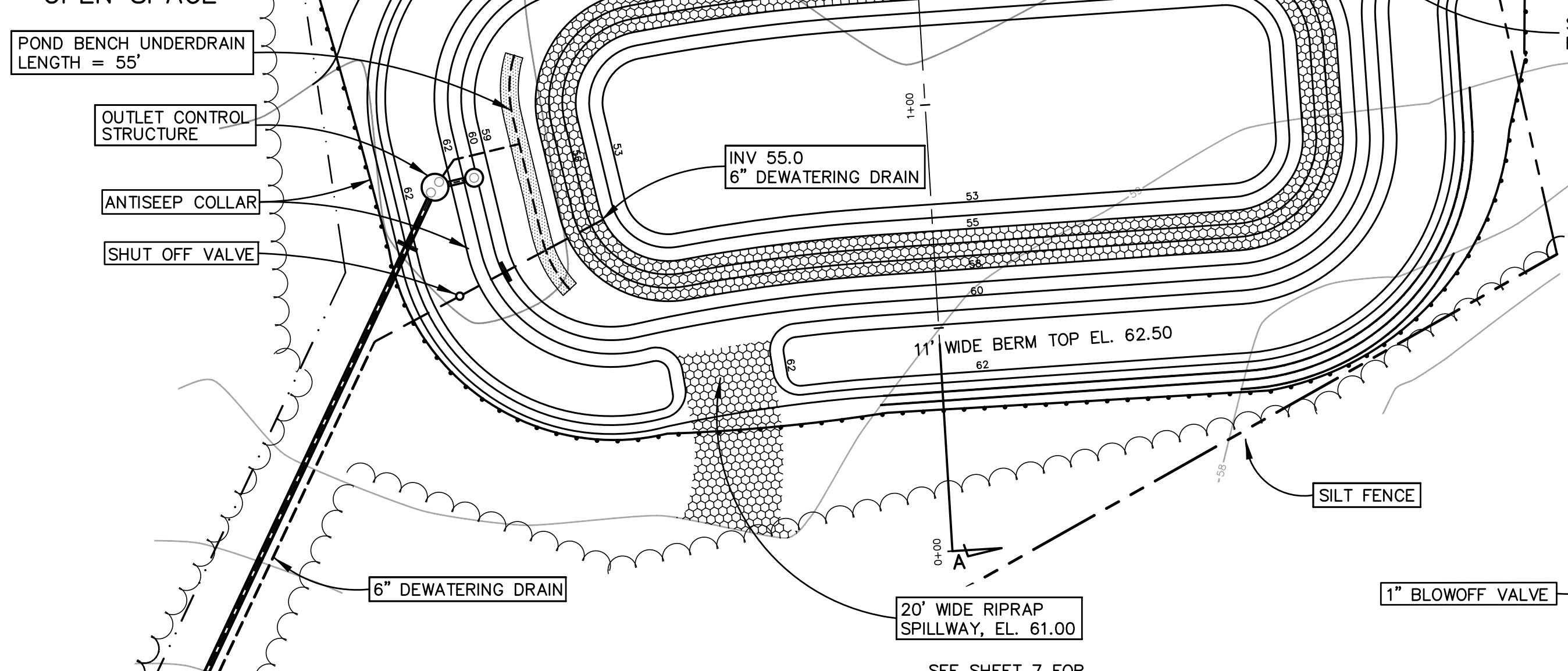


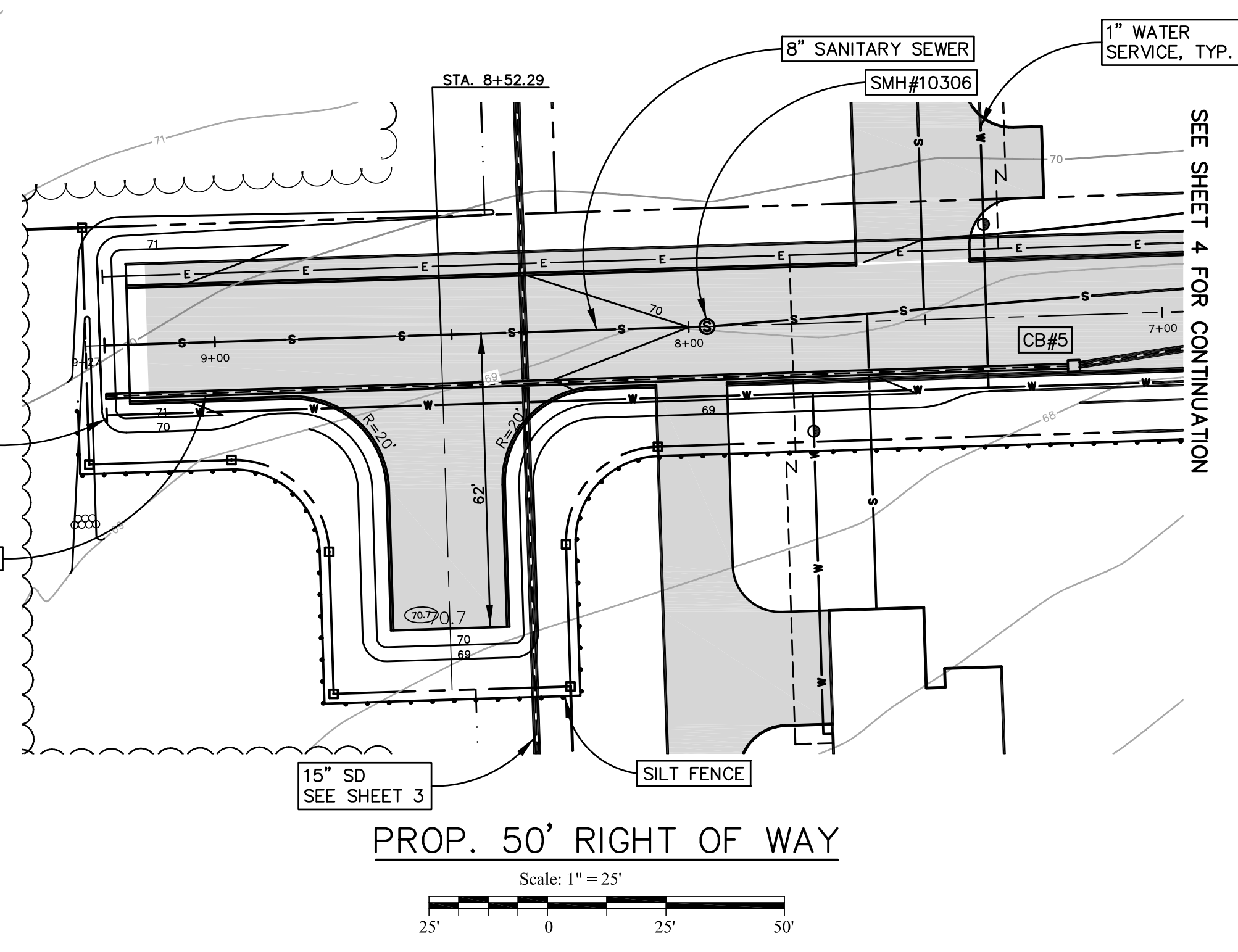
SYMBOL	DESCRIPTION
—	SIGN
—	WATER LINE
—	WATER VALVE
—	SHUTOFF VALVE (BALL VALVE)
—	SANITARY SEWER
—	UNDERGROUND ELECTRIC
—	STORM DRAIN
—	SILT FENCE
—	EXISTING CONTOUR
—	PROPOSED CONTOUR
—	TRANSFORMER PAD
—	UTILITY POLE
—	CATCH BASIN
—	HYDRANT
—	SEWER MANHOLE
—	DRAIN MANHOLE
—	PROPERTY LINE/RIGHT OF WAY
—	EASEMENT
—	UNDERGROUND ELECTRIC SERVICE
—	ROAD CENTERLINE



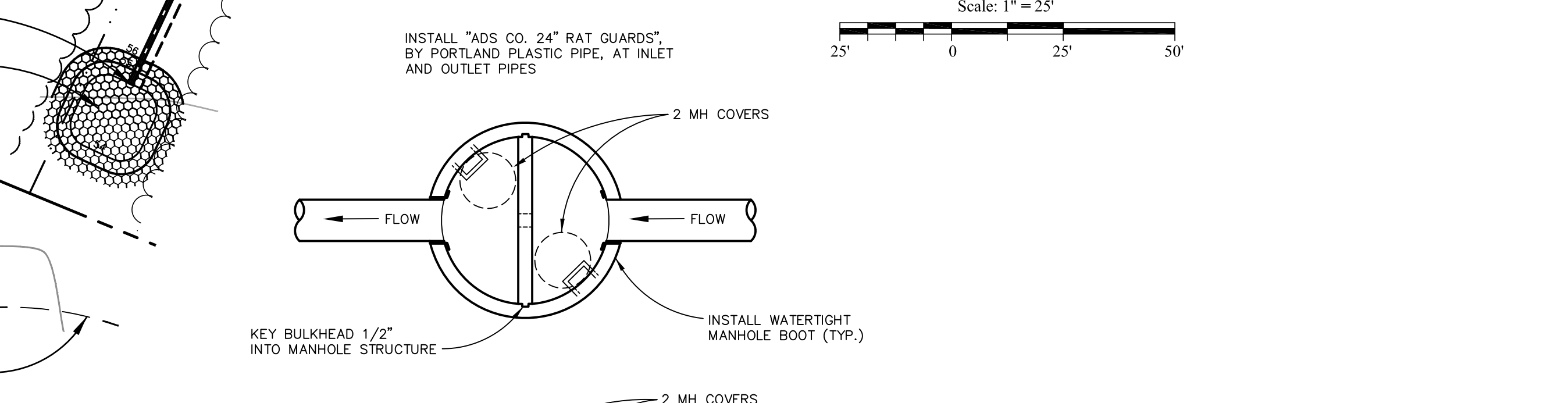
**POND SECTION A-A**  
SCALE  
VERTICAL: 1" = 5'  
HORIZONTAL: 1" = 25'



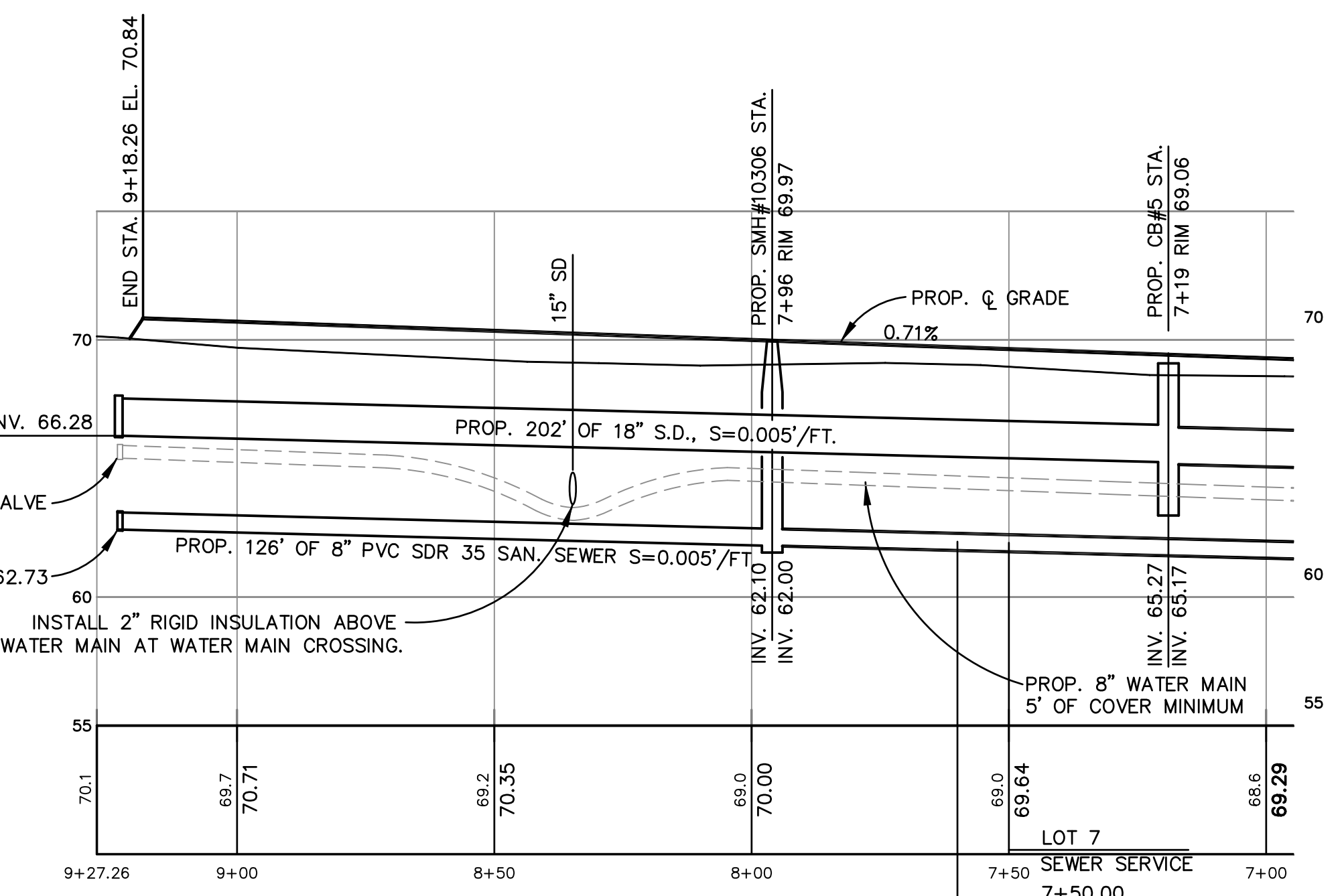
SEE SHEET 7 FOR ADDITIONAL POND DETAILS  
**POND A**  
Scale: 1" = 25'



**PROP. 50' RIGHT OF WAY**  
Scale: 1" = 25'



**OUTLET CONTROL STRUCTURE**  
NTS



**PROFILE**  
SCALE  
VERTICAL: 1" = 5'  
HORIZONTAL: 1" = 25'

**GRASSED UNDERDRAINED SOIL FILTERS:**  
INSPECTION OF THE FILTER BASIN MUST BE PROVIDED FOR EACH PHASE OF CONSTRUCTION BY THE DESIGN ENGINEER WITH REQUIRED REPORTING TO THE DEP. ALL MATERIAL INTENDED FOR THE FILTER BASIN MUST BE APPROVED BY THE DESIGN ENGINEER AFTER TESTS BY A CERTIFIED LABORATORY SHOW THAT THE MATERIAL CONFORMS TO ALL DEP SPECIFICATIONS. AT A MINIMUM, INSPECTIONS WILL OCCUR:

- AFTER THE PRELIMINARY CONSTRUCTION OF THE FILTER GRADES AND ONCE THE UNDERDRAIN PIPES ARE INSTALLED (NOT BACKFILLED);
- AFTER THE DRAINAGE LAYER IS CONSTRUCTED AND PRIOR TO THE INSTALLATION OF THE SOIL FILTER MEDIA;
- AFTER THE SOIL FILTER MEDIA HAS BEEN INSTALLED, SEEDED AND MULCHED; AND
- AFTER ONE YEAR, TO INSPECT VEGETATION AND MAKE CORRECTIONS.

**CONSTRUCTION OVERSIGHT:**  
THE APPLICANT WILL RETAIN THE SERVICES OF A PROFESSIONAL ENGINEER TO INSPECT THE CONSTRUCTION AND STABILIZATION OF ALL STORMWATER MANAGEMENT STRUCTURES. IF NECESSARY, THE INSPECTING ENGINEER WILL INTERPRET THE POND'S CONSTRUCTION PLAN FOR THE CONTRACTOR. ONCE ALL STORMWATER MANAGEMENT STRUCTURES ARE CONSTRUCTED AND STABILIZED, THE INSPECTING ENGINEER WILL NOTIFY THE DEPARTMENT IN WRITING WITHIN 30 DAYS TO STATE THAT THE POND HAS BEEN COMPLETED. ACCOMPANYING THE ENGINEER'S NOTIFICATION MUST BE A LOG OF THE ENGINEER'S INSPECTIONS DURING THE DATE OF EACH INSPECTION, THE TIME OF EACH INSPECTION, THE ITEMS INSPECTED ON EACH VISIT, AND INCLUDED ANY TESTING DATA OR SEVE ANALYSIS DATA OF EVERY MINERAL SOIL AND SOIL MEDIA SPECIFIED IN THE PLANS AND USED ON SITE.

**LOT GRADING AND DRIVEWAY LOCATION:**  
INSPECTIONS BY A PROFESSIONAL ENGINEER WILL CONSIST OF A VISIT TO THE SITE PRIOR TO CONSTRUCTION TO CONSULT WITH THE EARTHWORK CONTRACTOR AND A POST CONSTRUCTION MEETING TO CONFIRM GRADING ON LOTS AND FOR ALL DRIVEWAYS TO ENSURE RUNOFF IS DIRECTED ACCORDING TO PLANS AND TO OVERSEE THE RE-STABILIZATION OF THE LOT INTO A VEGETATED COVER.

**WETPONDS:**  
INSPECTION BY A PROFESSIONAL ENGINEER WILL CONSIST OF WEEKLY VISITS TO THE SITE TO INSPECT THE INSTALLATION OF EACH POND'S EMBANKMENT CONSTRUCTION, STORMWATER INLET, UNDERDRAINED GRAVEL, OUTLET, GRAVEL, OUTLET FILTER MATERIAL MAKEUP AND PLACEMENT, OUTLET CONTROL STRUCTURE, CLAY LINER, AND EMERGENCY SPILLWAY CONSTRUCTION FROM INITIAL GROUND DISTURBANCE TO FINAL STABILIZATION OF THE POND. AN INSPECTION OF THE UNDER DRAINED GRAVEL, OUTLET SHALL ALSO BE PERFORMED ONE YEAR AFTER THE FINAL STABILIZATION OF THE POND.

**BASIC STANDARDS - EROSION CONTROL MEASURES:**  
MINIMUM EROSION CONTROL MEASURES WILL NEED TO BE IMPLEMENTED AND THE APPLICANT WILL BE RESPONSIBLE TO MAINTAIN ALL COMPONENTS OF THE EROSION CONTROL PLAN UNTIL THE SITE IS FULLY STABILIZED. HOWEVER, BASED ON SITE AND WEATHER CONDITIONS DURING CONSTRUCTION ADDITIONAL EROSION CONTROL MEASURES MAY NEED TO BE IMPLEMENTED. ALL AREAS OF INSTABILITY AND EROSION MUST BE REPAIRED IMMEDIATELY DURING CONSTRUCTION AND NEED TO BE MAINTAINED UNTIL THE SITE IS FULLY STABILIZED OR VEGETATION IS ESTABLISHED. A CONSTRUCTION LOG MUST BE MAINTAINED FOR THE EROSION AND SEDIMENTATION CONTROL, INSPECTIONS AND MAINTENANCE.

THE MAINE EROSION AND SEDIMENT CONTROL HANDBOOK FOR CONSTRUCTION: 2014 REVISION TO THE 2003 MAINE EROSION AND SEDIMENT CONTROL FIELD GUIDE FOR CONTRACTORS.

NO.	DATE	REVISION DESCRIPTION
1	1/15/19	Submitted Plan for Town Review
2	2/22/19	Revised per Town Comments
3	2/25/19	Revised per Wells Sanitary District Comments
4	3/7/19	Revised per K&W Water District Comments
5	3/14/19	Revised per K&W Water District Comments
6	4/9/19	Revised per DEP Comments
7	4/23/19	Submit Final Plan to Town
8	4/24/19	Revised per M&D&P Comments



**BH2M**  
Berry, Huff, MacDonald, Miffligan Inc.  
Engineers, Surveyors  
28 State Street  
Corvallis, Maine 04838  
Tel: (207) 839-2771  
Fax: (207) 839-8250

FOR  
Preachers Aid Society Of New England  
51 Charles Wesley Court  
Wells, Maine

**ROADWAY PROFILE & STORMWATER POND**  
WESLEY BY THE SEA  
PHASE III  
HARRISCKETT ROAD  
WELLS, MAINE

DESIGNED W. Pelkey	DATE Oct. 2018
DRAWN Dept.	SCALE As Noted
CHECKED S. Blake	JOB. NO. 18118

SHEET  
**5**  
REPRODUCTION OR REUSE OF THIS DOCUMENT WITHOUT THE EXPRESSED WRITTEN CONSENT OF BH2M INC. IS PROHIBITED