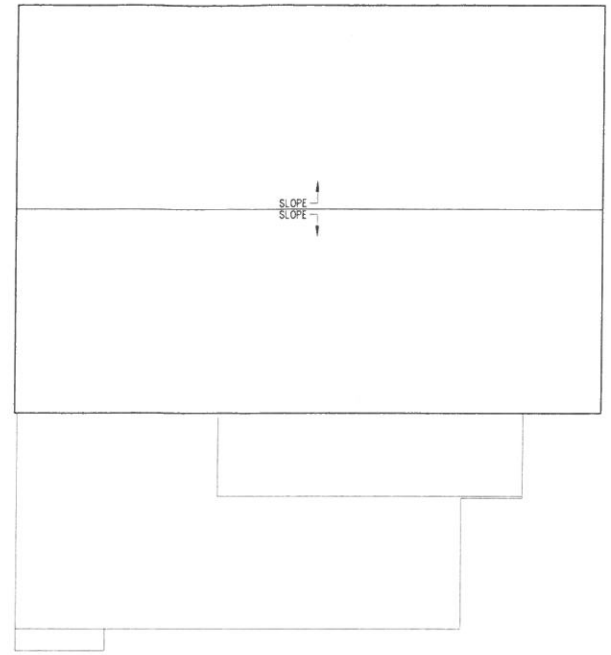
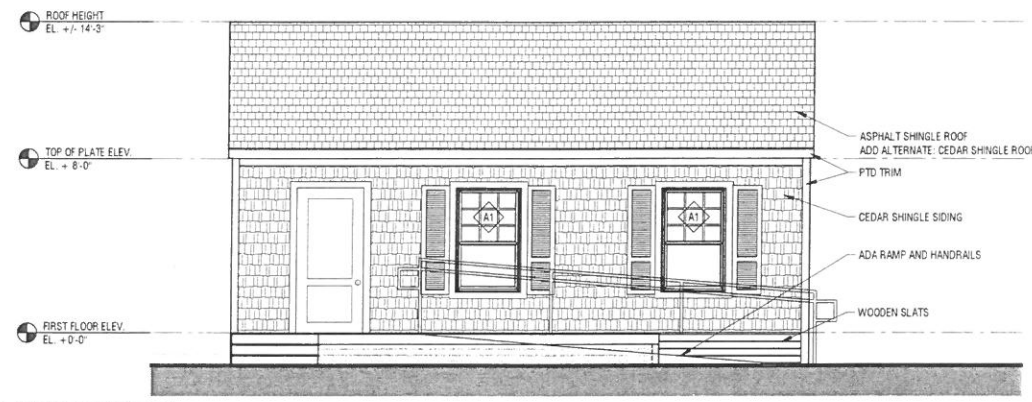


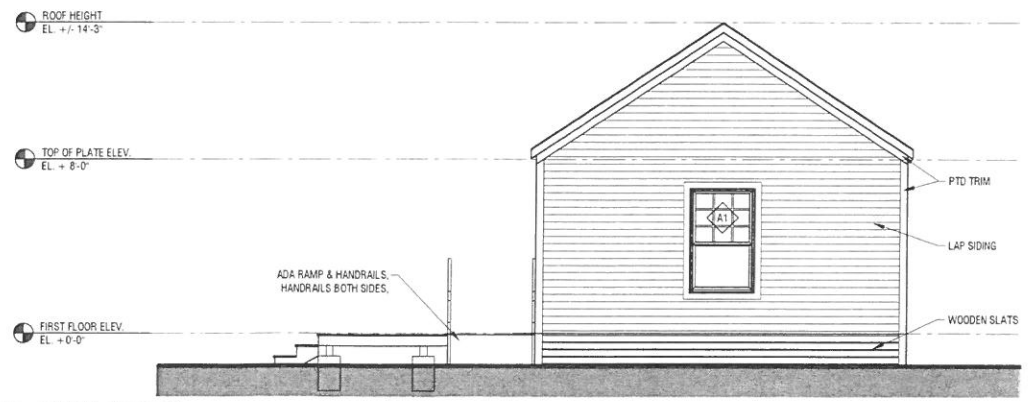
1 FLOOR PLAN
SCALE: 1/4" = 1'-0"



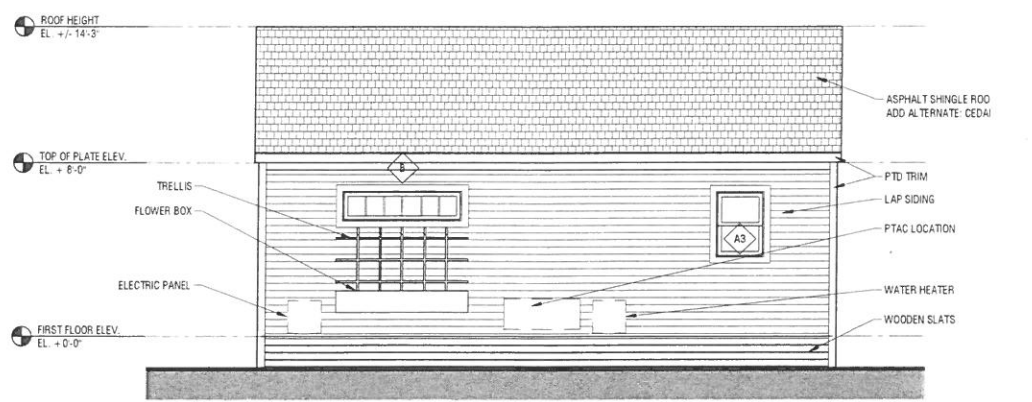
2 ROOF PLAN
SCALE: 1/4" = 1'-0"



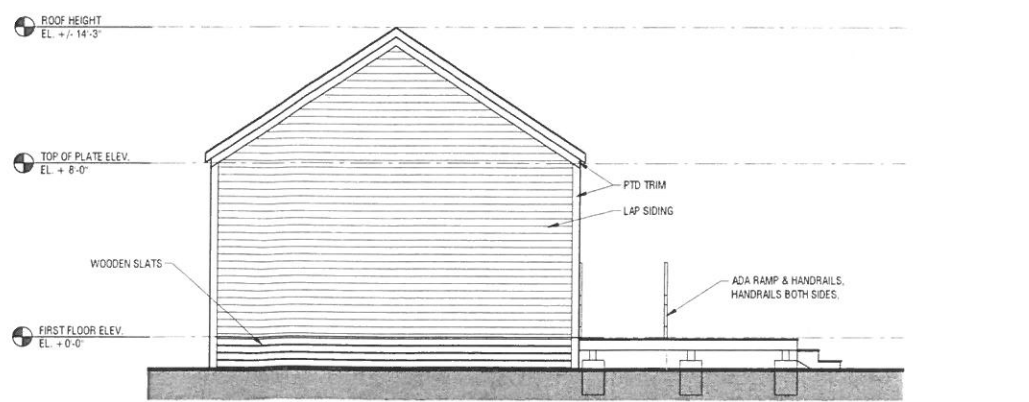
3 FRONT ELEVATION
SCALE: 1/4" = 1'-0"



4 SIDE ELEVATION
SCALE: 1/4" = 1'-0"

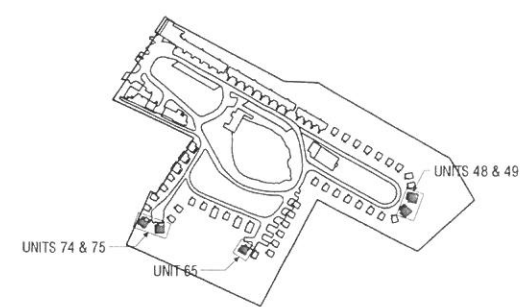


6 BACK ELEVATION
SCALE: 1/4" = 1'-0"



7 SIDE ELEVATION
SCALE: 1/4" = 1'-0"

- GENERAL NOTES:
- SEE G.001 FOR SYMBOLS, ABBREVIATIONS AND GENERAL INFORMATION
 - SEE SHEET G.002 FOR ADA FIXTURE DETAILS, ADA DOOR CLEARANCE DETAILS, AND WALL TYPES AS INDICATED ON THIS PLAN
 - PROVIDE AND COORDINATE ALL REQUIRED IN-WALL BLOCKING AS REQUIRED FOR WORK AT NEW PARTITIONS
 - ALL NEW ALL PENETRATIONS TO BE FIRE SEALED AS REQUIRED TO MEET UL DESIGNATION FOR ASSEMBLIES PENETRATED
 - SEE PLANS AND INTERIOR ELEVATIONS AND SCHEDULES FOR WALL FINISH TYPES AND LOCATIONS
 - ALL DOOR GLAZING TO BE FULLY TEMPERED
 - ALL ELECTRICAL, MECHANICAL, PLUMBING, AND FIRE ALARM WORK TO BE FILED UNDER A SEPARATE APPLICATION
 - ADDITIONAL REMOVAL OF MATERIALS IS REQUIRED BEYOND THE SCOPE OF DEMO WORK TO EXECUTE PLANS AS SHOWN. COORDINATE AND V.I.F.
 - VERIFY ALL DIMENSIONS IN FIELD.
 - COORDINATE PROPOSED WINDOW R.O. REQUIREMENTS WITH EXISTING R.O. MODIFICATIONS ARE REQUIRED.
 - VERIFY EXISTING DOOR R.O.'S AND COORDINATE AS REQD.
 - SHIM AND LEVEL UNITS AS REQD.
 - COTTAGES TO BE PROVIDED WITH 13D SPRINKLER SYSTEM
 - COTTAGES TO BE SUPPORTED ON HELICAL PIERS
 - SEE CIVIL PLANS FOR MORE INFORMATION



5 SITE PLAN

REVISIONS

CABIN TYPE 'A' FLOOR PLAN & EXTERIOR ELEVATIONS

DRAWING TITLE: **A.101**

PROJECT NAME: SEAHORSE RESORT

DATE OF ISSUE: 6.7.2022

ISSUED FOR: PLANNING BOARD APPROVAL

SCALE: AS NOTED

1981 POST RD
WELLS, MAINE, 04090

BARRETT MADE ARCHITECTURE + CONSTRUCTION

PROGRESS SET,
NOT FOR CONSTRUCTION