

PREPARED FOR: PLATZ ASSOCIATES
TWO GREAT FALLS PLAZA
AUBURN, MAINE 04210

PROJECT: BULRUSH RETAIL PLAZA
279 POST ROAD & SALT MARSH CIRCLE
WELLS, MAINE 04090

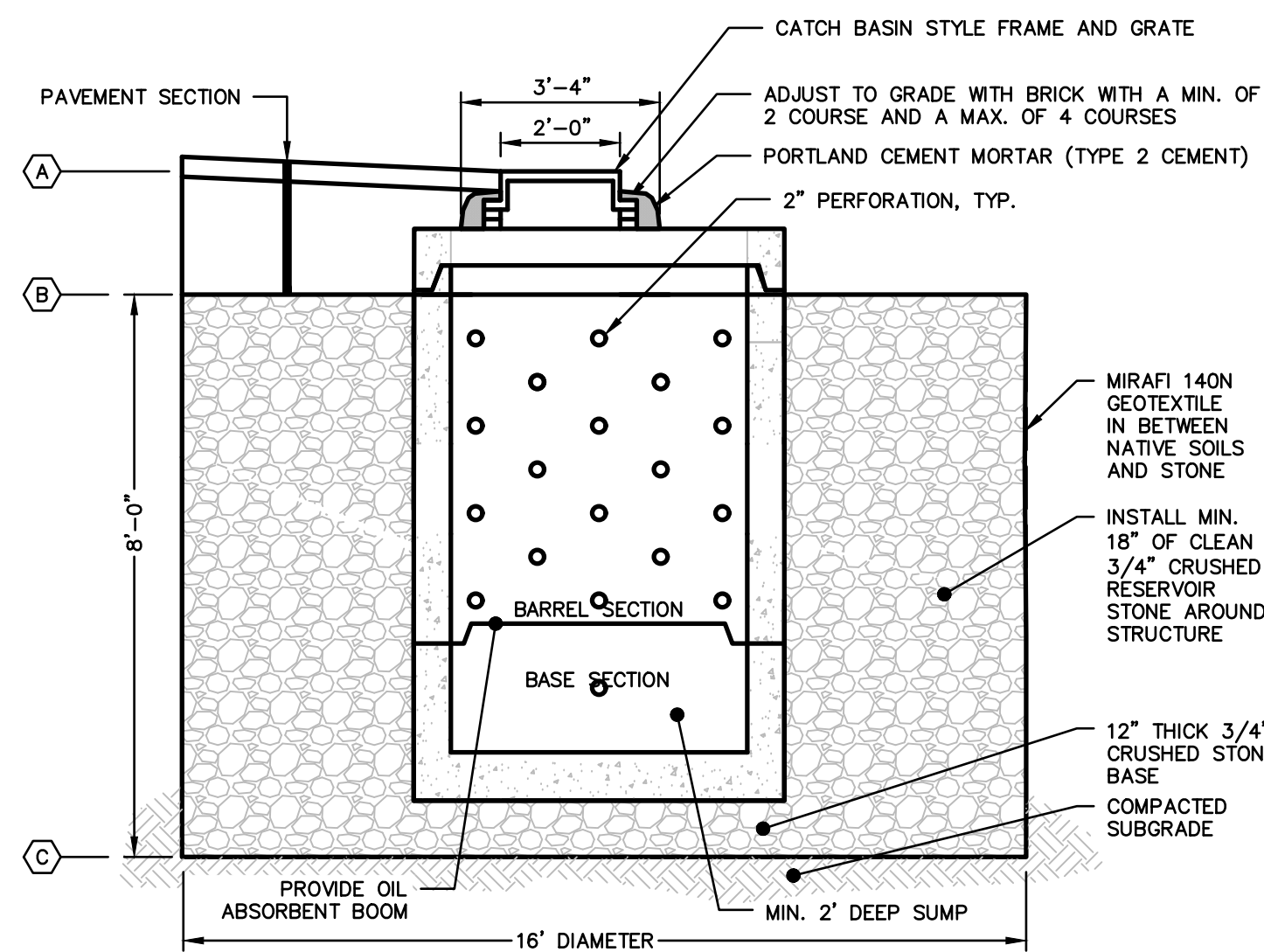
TITLE: GRADING AND DRAINAGE PLAN

REVISION:

| NO. | DATE | APPR. | DESCRIPTION |
|-----|----------|-------|-------------------------|
| 1 | 03-27-23 | TAL | PLANNING BOARD REVIEW |
| 2 | 04-08-23 | TAL | REVISED PER TOWN REVIEW |
| 3 | 04-13-23 | TAL | REVISED PER TOWN REVIEW |

DRAWN: TAL
SCALE: NOTED
DATE: 03/27/2023

SHEET: C-1
1 of 2

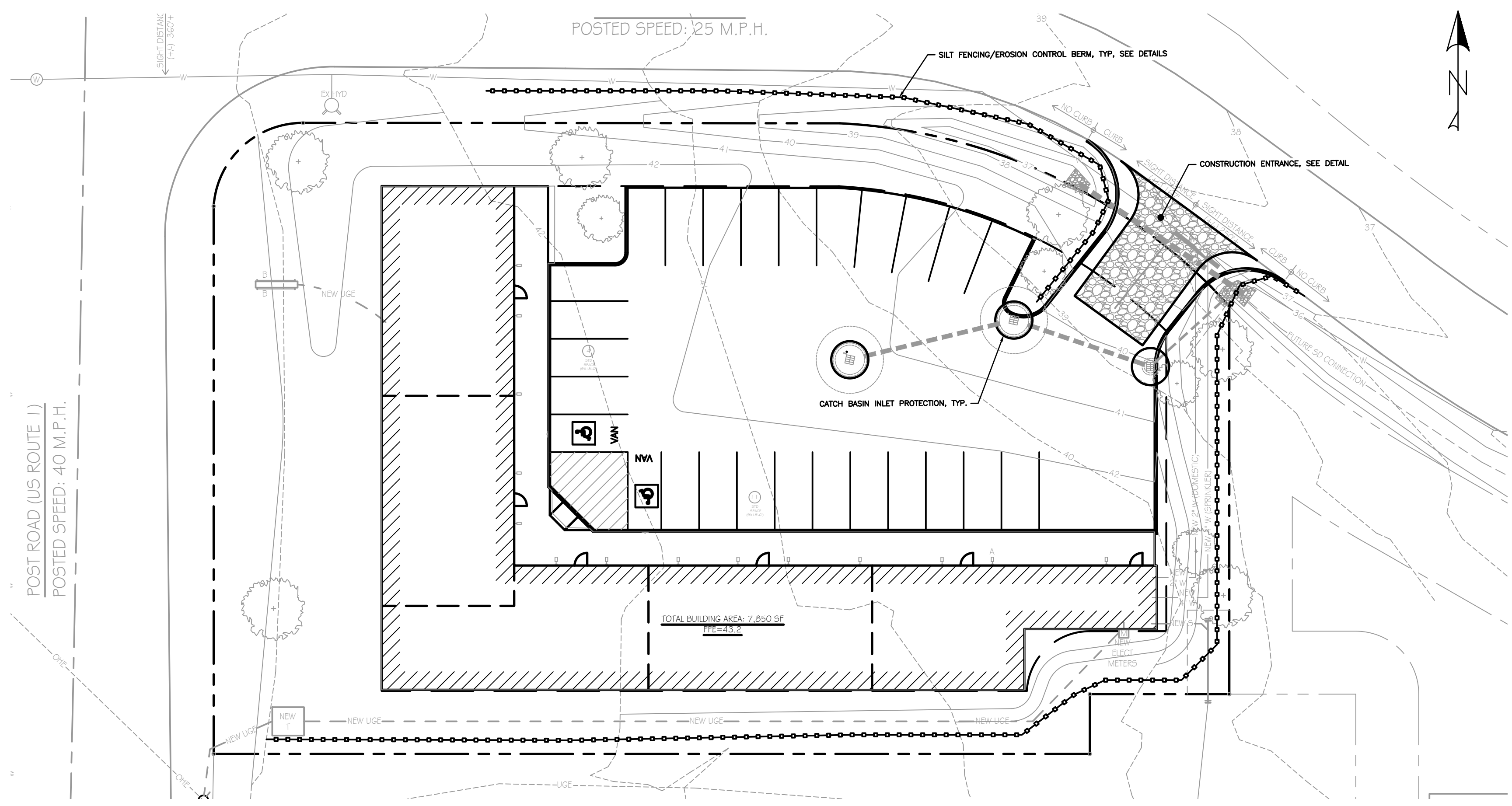


NOTES:

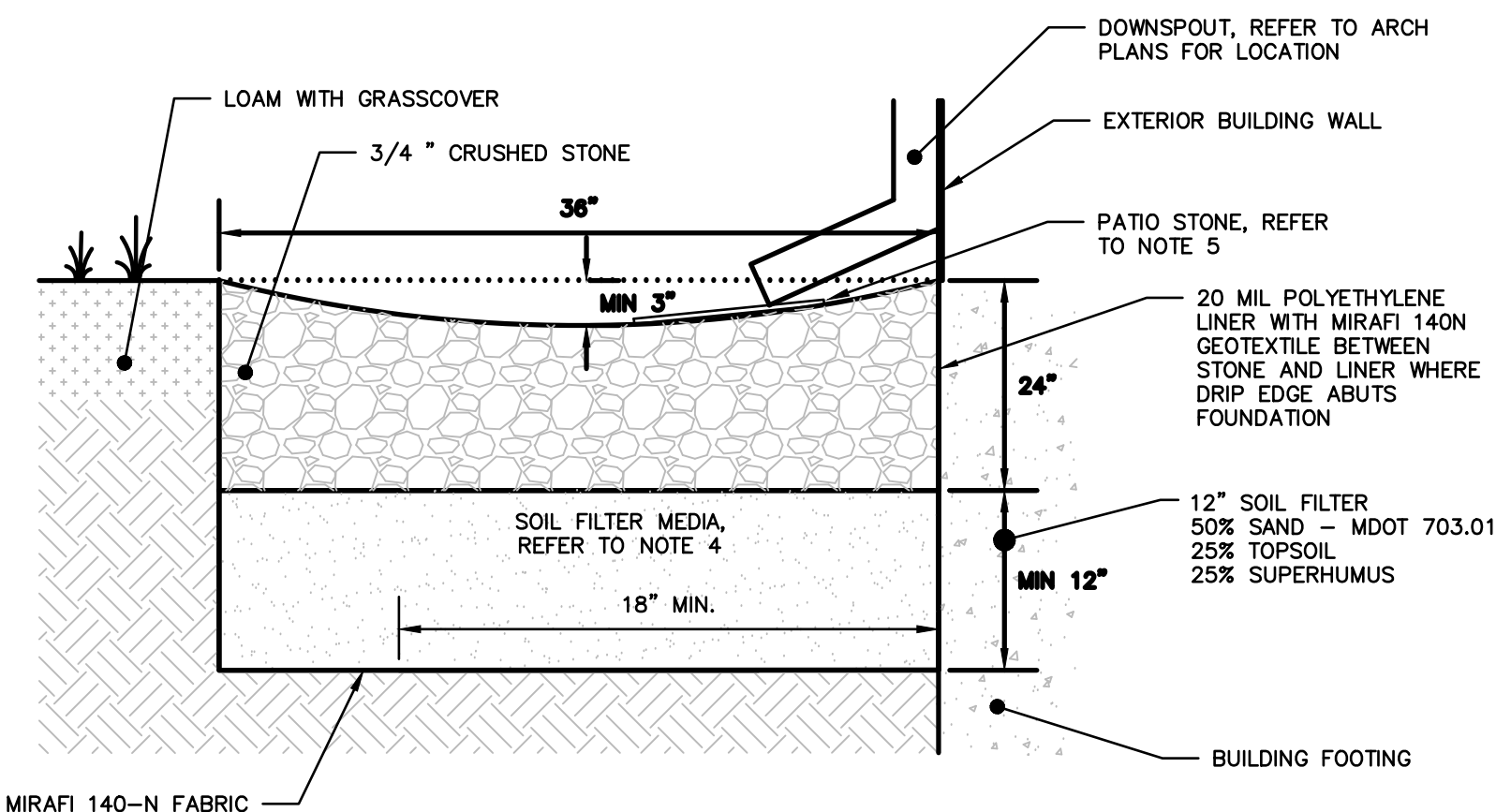
1. ALL CONCRETE TO HAVE A MIN. OF 4,000 PSI COMPRESSIVE STRENGTH AT 28 DAYS. DESIGN LOAD FOR H-20 WHEEL LOAD.
2. CATCH BASIN TO CONFORM TO ASTM-C478 SPECIFICATIONS.
3. REINFORCE TO 0.12 IN SQ./LF.
4. JOINTS SEALED WITH BUTYL RUBBER.
5. ALL PIPES TO HAVE A WATERTIGHT SEAL.
6. SUBMITTAL OF SHOP DRAWING TO ENGINEER FOR APPROVAL IS REQUIRED.
7. REFER TO THE GRADING & DRAINAGE PLAN FOR LAYOUT, ELEVATIONS OTHER DETAILS.

| ITEM | SCHEDULE | |
|--------------------------|----------|-------|
| | DW-1 | DW-2 |
| (A) RIM | 40.40 | 41.20 |
| (B) TOP OF CRUSHED STONE | 38.70 | 39.50 |
| (C) BOT OF CRUSHED STONE | 30.70 | 31.50 |

8'-0" DIA. PRECAST PERFORATED DRY WELL
NOT TO SCALE



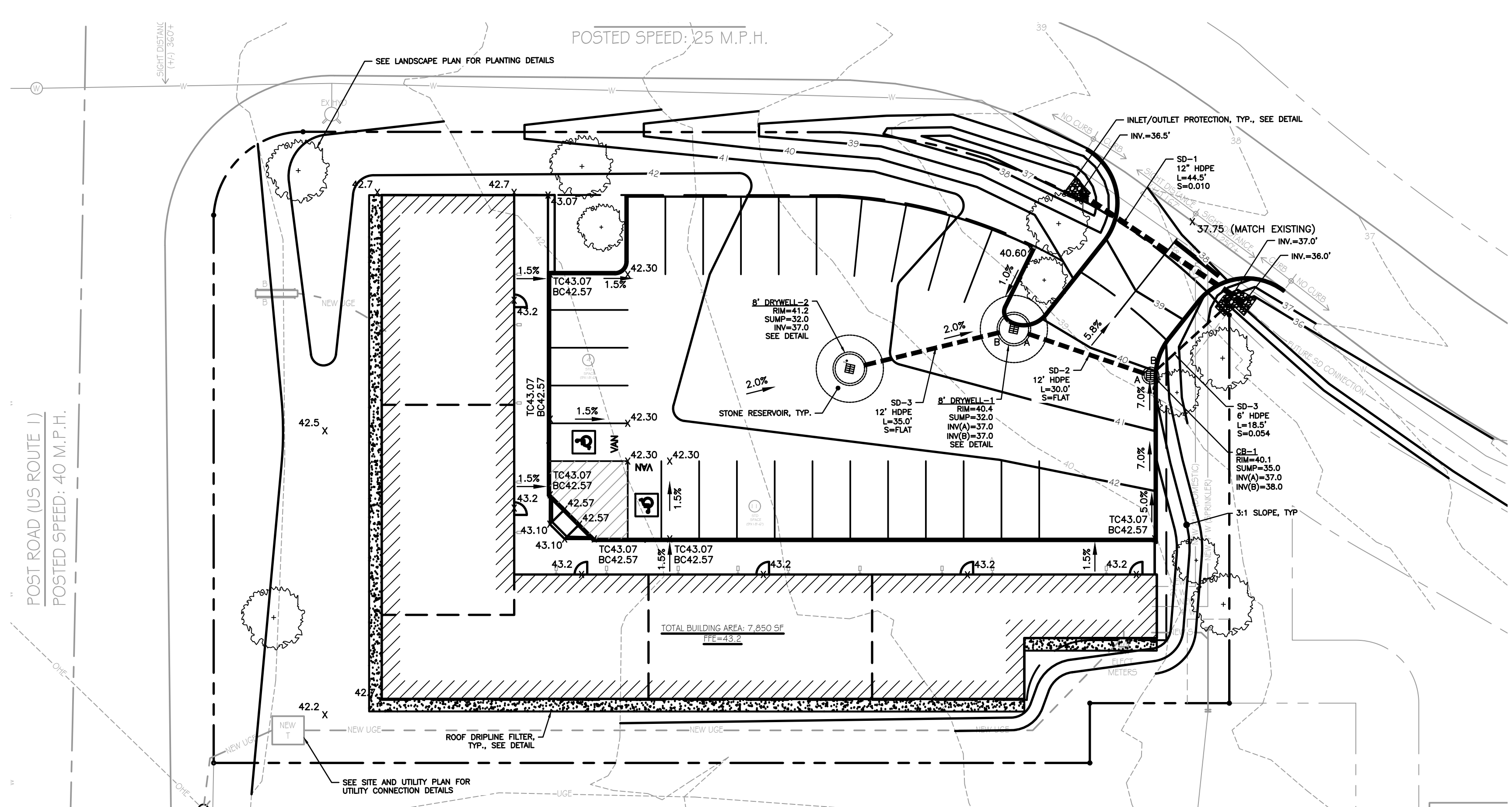
EROSION CONTROL PLAN
SCALE 1"=20'



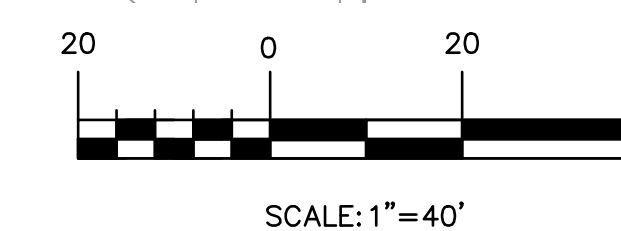
NOTES:

1. FINAL DESIGN MUST COMPLY WITH ALL APPROPRIATE SPECIFICATIONS FROM THE STORMWATER MANAGEMENT FOR MAINE BMP MANUAL, CHAPTER 7.
2. THE CRUSHED STONE RESERVOIR BED MUST CONSIST OF CRUSHED ROCK WITH A POROSITY OF 40%.
3. FOUNDATION BACKFILL MAY BE USED AS SOIL FILTER MEDIA AS LONG AS THE MATERIAL IS A MINERAL SOIL WITH BETWEEN 4-7% FINES (PASSING #200 SIEVE) AND IS 4" THICK AT MINIMUM.
4. THE SOIL FILTER MEDIA SHALL NOT BE CONSTRUCTED UNTIL THE AREA DRAINING TO THE BASIN HAS BEEN PERMANENTLY STABILIZED.
5. PATIO STONE TO BE PLACED AS TO REDIRECT CONCENTRATED FLOW FROM DOWNSPOUT. CONTRACTOR TO FINALIZE STONE SIZE.

ROOF DRIPLINE FILTRATION DETAIL
NOT TO SCALE



GRADING PLAN
SCALE 1"=20'



SCALE: 1"=40'