

## Signs of a Release

### Sight\*

- Liquid on the ground
- Rainbow sheen on water
- Dead vegetation in an otherwise green area
- Dirt blowing into the air
- White vapor cloud
- Mud or water bubbling up
- Frozen area on ground

\* Signs vary based upon product



Liquid on the ground



Mud or water bubbling up



Fire or explosion



Rainbow sheen on water



White vapor cloud



Dead vegetation in a green area

- A hissing or roaring sound

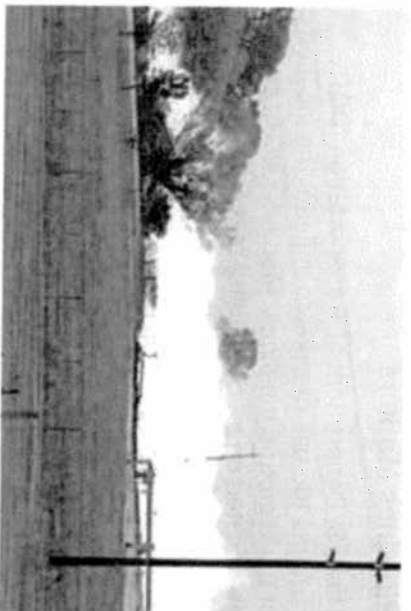
### Sound

### Smell

- Odors such as gas or oil
- Natural gas is colorless and odorless - Unless mercaptan has been added (Note: A "rotten egg odor")

### Other - Near Pipeline Operations

- Burning eyes, nose or throat
- Nausea



## What to do if a Leak Occurs

- Evacuate immediately upwind
- Eliminate ignition sources
- Advise others to stay away
- Call 911/local emergency number
- Call pipeline company - number on warning marker
- Call collect if necessary
- Make calls from safe distance not "Hot Zone"
- Give details to pipeline operator
  - Your Name
  - Your Phone Number
  - Leak Location
  - Product Activity
  - Extent Of Damage

## What Not to do if a Leak Occurs

- Do Not drive into leak or vapor cloud
- Do Not make contact with liquid or vapor
- Do Not operate pipeline valves (unless directed by pipeline operator)
- Valve may be automatically shut by control center
- Valve may have integrated shut-down device
- Valve may need to be shut by hand
- Valve may be operated by qualified pipeline personnel only, unless specified otherwise

## Ignition Sources May Vary - A Partial List

- Static Electricity
- Metal To Metal Contact
- Pilot Lights
- Matches/Smoking
- Sparks From Telephone
- Electric Switches
- Electric Motors
- Overhead Wires
- Internal Combustion Engines
- Garage Door Openers
- Firearms
- Photo Equipment
- Remote Car Alarms/Door Locks
- High Torque Starters - Diesel Engines
- Communication Devices

## HCA and IMP

Contact your local pipeline company for information on High-Consequence Areas and Integrity Management Programs.

